



## FOREST BATHING

Ashley GARRETT, Anne LEITH, Iain MACHELL, John Lyon PAUL,  
Christy RUPP and Martin WEINSTEIN



# Woodstock Byrdcliffe Guild

## Iain Machell



Tree 1

Ink on paper

600



Tree 2

ink on paper

600



Tree 3

pencil, gouache on  
paper

600



Tree4

ink on rice paper

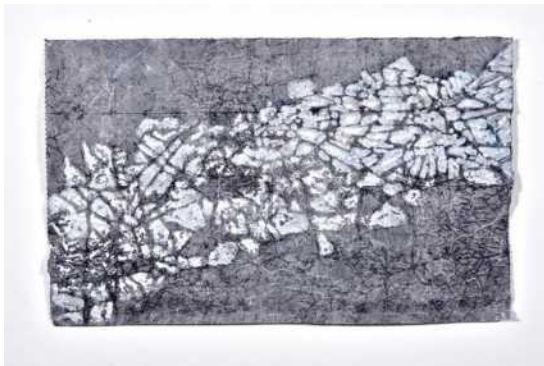
600



Tree5

ink, gouache on paper

800



Tree 6

ink, gouache on paper

450



Tree 7

ink on stone paper

600



Tree 8

Acrylic, gouache on  
stonen paper

600



Tree 9

ink on rice paper



Tree 10

ink on paper

350



Tree 11

Acrylic wash on paper

450



Tree 12

Acrylic wash on paper

450



Tree 13

Acrylic wash on paper

450



Tree 14

Acrylic wash on paper

450



Tree 15

Acrylic wash on paper

450



Tree 16

pastel on rice paper

800



Tree 17

pastel on rice paper

800



Tree 18

ink, acrylic on shaped  
paper

900



Tree 19

acrylic on layered  
canvas

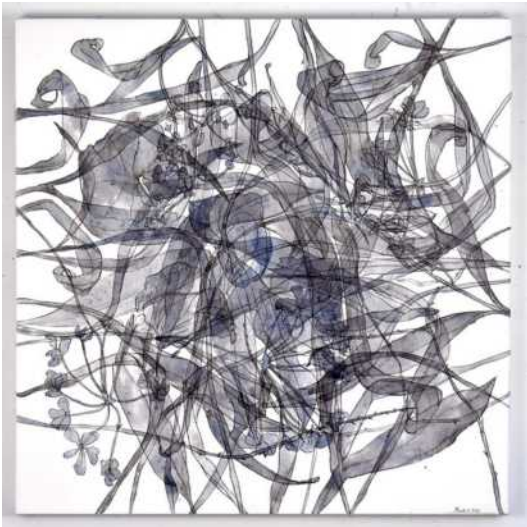
2400



Tree 20

acrylic wash on paper

2400



Tree 21

acrylic, ink on canvas

2500

## Ashley Garrett



Cardinal

oil on canvas

5500



Darkling Plain

oil on canvas

1500



Gloaming

oil on canvas

1500



Lucaria

oil on canvas

2000



Release

oil on linen

2000



Weona

oil on canvas

6500



Eidolon

colored pencil and  
pastel on paper

1500

## Martin Weinstein



Snowy Evening  
under Snowy  
Morning

acrylic on multiple  
acrylic sheets

4000



Into the Oaks, Dusk  
Under Afternoon

acrylic on multiple  
acrylic sheets

6500





Path, Afternoon Over Evening acrylic on multiple acrylic sheets

4000



Road Through Oaks, Evening Under Afternoon acrylic on multiple acrylic sheets

6500



Sassafrass, Morning Under Afternoon acrylic on multiple acrylic sheets

6500



Pond, Fall, Morning  
Under Afternoon acrylic on multiple  
acrylic sheets

6500

### John Lyon Paul



Turning to the Light acrylic on plate glass

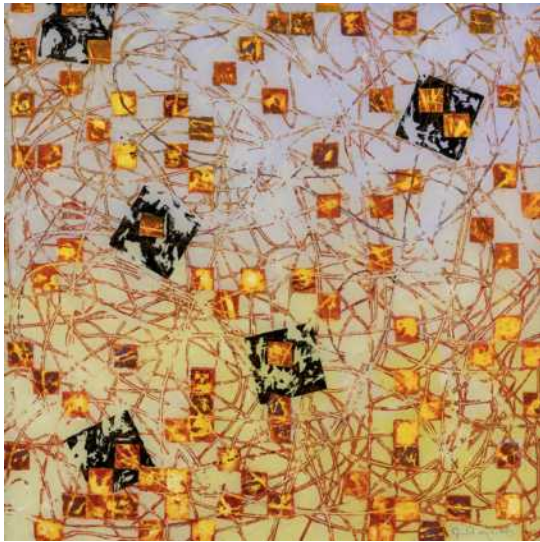
5000



Incantation

acrylic on plate glass

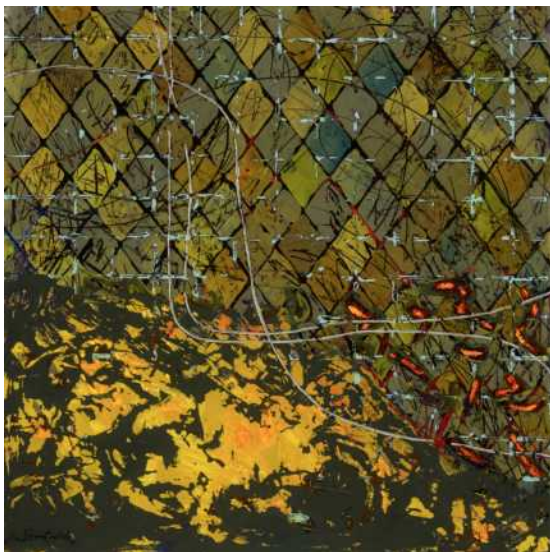
5000



Below Sound

acrylic on plate glass

5000



Miracle on the Mountain

acrylic on plate glass

5000



Living Void

acrylic on plate glass NFS



Fawn Constellation

acrylic on plate glass

On  
Loan  
Courte  
sy of  
Sean  
Miller

## Anne Leith



The Creek

Oil on panel

3000



The River

Oil and metal leaf on panel

3000



The River Trail

Oil on panel

3500



The Reservoir

Oil and metal leaf on panel

4000



The River

Oil and metal leaf on panel

3500



The Cove

Oil on panel

3500

### Christy Rupp



Open Veins

cut paper collage

4000



Fungible

cut paper collage

4000



Reservoir

cut paper collage

4000



Variant

cut paper collage

4000



Rainforest Sources  
of Bio-Pirated  
Western Medicine

These are representations of stolen life forms, derived from plants and animals of the rainforest, discovered through generations of indigenous wisdom. Synthesized in the lab, medicinal formulas have been bio-pirated, patented, and are claimed as the intellectual property of big pharmaceutical corporations.

4000  
each,  
Funghi  
3000  
each



Fire Ant (Solenospin)  
antibiotic,  
anticoagulant,  
rheumatism

welded steel, paper and  
wax

4000



Snake (Satopril),  
heart failure, stroke

welded steel, paper and  
wax

4000





Tree Fungus  
(Polysaccharide peptide) lungs, colon, stomach cancers

welded steel, paper and wax

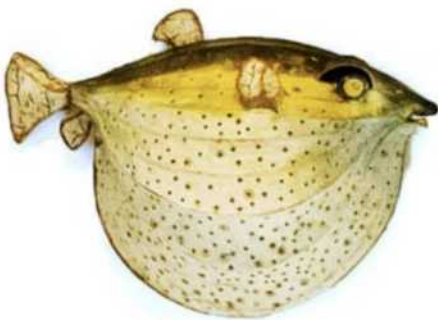
9000



Frog (Epibatidine)  
pain killer

welded steel, paper and wax

4000



Blowfish  
(Tetrodotoxin) pain suppressant, heroin substitute

welded steel, paper and wax

4000