



OPUS 40

356 George Sickle Road

Saugerties, NY 12477

ANNE LEITH | Land Escape

Curated by Jen Dragon

April 4 - May 10, 2026

Gallery Hours: April | Saturday - Sunday 10:00 - 5:00

May | Saturday - Monday: 10:00 - 5:00 PM

Exhibition Reception: Sunday April 12, 3:00 - 5:00 PM

Contents: 3 pages with 6 images

[EXHIBITION WEBPAGE](#)

(Saugerties, NY) - Opus 40 presents [ANNE LEITH | Land Escape](#), a solo exhibition of paintings and works on paper by Saugerties artist, Anne Leith. With oil paints, easel and large boards, Leith ventures into the woodlands of the Hudson Valley to capture the transient light reflecting off water and filtering through branches. Inspired by the forest, waterfalls, clouds and streams of the Hudson Valley and Catskills region, Anne Leith responds to nature's rhythms with vibrant pigments and gestural brushwork.

[ANNE LEITH | Land Escape](#) opens on Saturday April 4 and a reception for the artist is on **Sunday, April 12 from 3:00 - 5:00 PM** at the Richards Gallery at Opus 40, 356 George Sickle Road, Saugerties, NY 12477.

About Anne Leith:

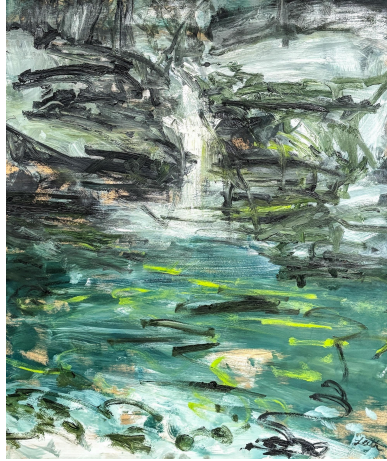
Anne Leith is dedicated to painting the world around her, both in the plain air tradition and in the studio. With an MFA from the University of Pennsylvania and an MA in

Contemporary Art History, she credits other artists as her teachers and inspiration. Anne Leith will have a solo exhibition at [Castello 925](#) Gallery in Venice, Italy during the 61st Venice Biennale. This show at Opus 40 is her first solo exhibition in her adopted hometown of Saugerties.

Please click on image or title for hi-res image



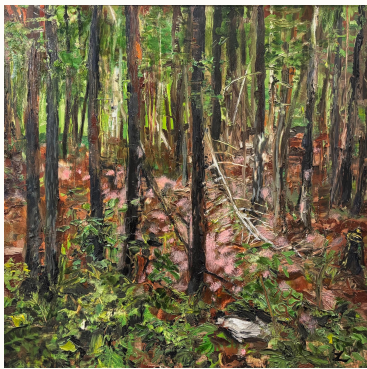
Anne Leith painting at Opus 40 during the annual community day, May 2025



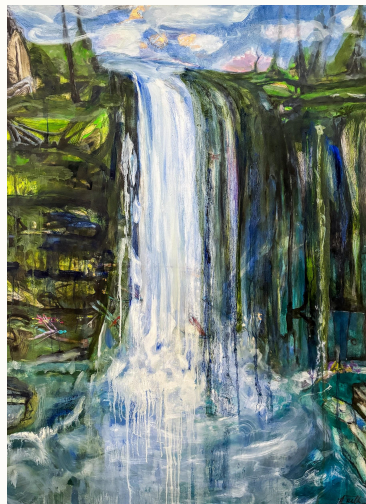
Anne Leith, [Plattekill Waterfall](#), 2019, oil on board, 32 x 44 in



Anne Leith | [Saugerties Meadow](#) | 2025 | oil on panel | 24 X 24 In



Anne Leith | [Woodstock](#)



Anne Leith, [Catskills](#)



Anne Leith | [Opus 40](#) |

[Woodlands](#) | 2024 | oil
on board | 24 X 24 In

[Waterfall](#) | 2020 | oil on
panel | 36 x 48 in

2025 | oil on panel | 36 x
36 in



About OPUS 40:

Created over four decades by visionary artist and Bard professor Harvey Fite, Opus 40 is a 6.5-acre earthwork made of finely fitted bluestone, rising out of an abandoned quarry at the foot of Overlook Mountain in Saugerties, NY. In 1978, Fite's widow, Barbara, established the nonprofit Opus 40 Inc., opening the sculpture, along with 63 acres of meadows, walking trails, bluestone quarries, as well as the Quarryman's Museum to visitors from all over the world. Today, Opus 40 offers a diverse selection of events in a wholly unique setting that *Architectural Digest* has called "one of the most beguiling works of art on the entire continent."

###